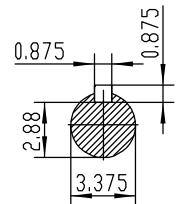
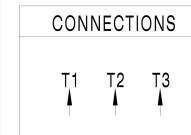


NOTES:

1. All Cast Iron Construction
2. Design B
3. IP55 Labyrinth seals on DE and DDE
4. H Class Insulation System
5. Max Winding Temperature rise 80°C
6. Max bearing temperature rise 45°C for 4 pole and 50°C for 2 pole motors when direct coupled.
7. Regreasable bearings
8. External Grounding provisions
9. Maximum foot flatness deviation .127 mm
10. Conductive Polymer Cooling Fan
11. Diagonally Split Conduit Box rotatable in 90° Increments
12. Lead seals in conduit box
13. Maximum no load sound power 85 dBA(2 pole),
Maximum no load sound power 70 dBA(4 pole),
Maximum no load sound power 64 dBA(6 pole).
14. No Load Motor Vibration not to exceed
 - a.Radial 60HZ - 2.03mm/s (2,4 pole) and 1.52mm/s (6 pole)
 - b.Axial 60HZ - 1.52mm/s
15. 300 series Stainless Steel hardware
16. Epoxy Coating meeting ASTM B117-97 for 96 h
17. All internal surfaces coated with anti-corrosion coating.
18. Internal Shaft Grounding brush installed on drive end.
19. No Load test report included with motor

		MODEL SD3-449T-6-RR-E-200		TECHTOP.COM	
		NEMA Premium 60 Hz 50 Hz		T 449T200U6B	
HP	200	200	MFG PN	SER # 1603102059	
RPM	1190	985	DATE	0688002	
VOLT(3Ø)	460	380	DESIGN	B	
FLA	230	281	FRAME	449T	
SF	1.15	1	ENCL	TEFC	
KVA CODE	G	E	IP	55	
NOM.EFF	0.958		DUTY	Cont.	
BEARING SIZE		INS CL	H		
DE NU 319		AMB	40 °C		
ARC ARRESTOR CODE 6319-C3		WEIGHT	2298.2 lbs		
VFD 15:1 CT-1.0 SF		MADE IN CHINA			



		NEMA TEFC 449T-200HP-6P	
		IEEE-841 UNITS:INCH	
ShangHai HIMAK Electrical Machinery CO., LTD		NO:	CY260.A20.013
Design		Standard	
Checker		Allow	
Auditing		Date	
		STEP MARK	1:7
		SORT	Cast iron Motor