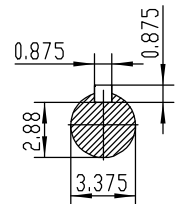
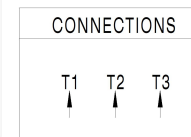


**NOTES:**

1. All Cast Iron Construction
2. Design B
3. IP55 Labyrinth seals on DE and DDE
4. H Class Insulation System
5. Max Winding Temperature rise 80°C
6. Max bearing temperature rise 45°C for 4 pole and 50°C for 2 pole motors when direct coupled.
7. Regreasable bearings
8. External Grounding provisions
9. Maximum foot flatness deviation .127 mm
10. Conductive Polymer Cooling Fan
11. Diagonally Split Conduit Box rotatable in 90° Increments
12. Lead seals in conduit box
13. Maximum no load sound power 85 dBA(2 pole),  
Maximum no load sound power 70 dBA(4 pole),  
Maximum no load sound power 64 dBA(6 pole).
14. No Load Motor Vibration not to exceed
  - a.Radial 60HZ - 2.03mm/s (2,4 pole) and 1.52mm/s (6 pole)
  - b.Axial 60HZ - 1.52mm/s
15. 300 series Stainless Steel hardware
16. Epoxy Coating meeting ASTM B117-97 for 96 h
17. All internal surfaces coated with anti-corrosion coating.
18. Internal Shaft Grounding brush installed on drive end.
19. No Load test report included with motor

<b>TECHTOP IEEE 841</b> SEVERE DUTY ELECTRIC MOTOR		TECHTOP.COM	
MODEL	SD3-449T-4-RR-E-250	MFG PN	T 449T250U4B
<b>NEMA Premium</b>	60 Hz 50 Hz	SER #	1603102057
HP	250 250	DATE	0688002
RPM	1785 1480	DESIGN	B
VOLT(3Ø)	460 380	FRAME	449T
FLA	273 334	ENCL	TEFC
SF	1.15 1	IP	55
KVA CODE	G E	DUTY	Cont.
NOM.EFF	0.962	INS CL	H
<b>BEARING SIZE</b>		DE	NU 319
<b>ARC ARRESTOR</b>		ODEI	6319-C3
VFD 15:1 CT-1.0 SF		WEIGHT	2342 lbs
		MADE IN CHINA	



 ShangHai HIMAK Electrical Machinery CO., LTD		NEMA TEFC 449T-250HP-4P IEEE-841 UNITS:INCH					
		NO:	CY260.A20.008				
Design		Standard		STEP MARK	1:7	SORT	Cast iron Motor
Checker		Allow					
Auditing		Date					