



<b>Model Number:</b>	SD3-449T-4-BR-E-300
<b>MFG PN:</b>	37061
<b>List Price:</b>	

All data shown at HIGH voltage setting Format: STD 3 Phase

Electrical Data				General Data		
Rated Motor Output Power	300.0	HP		Frame Size	449T	
Rated Motor Speed	1785	r/min 60Hz		Enclosure	TEFC	
	1480	r/min 50Hz		Mounting	Rigid	
Rated Motor Voltage (3 Phase)	460	V/60Hz		NEMA Design	B	
	380	V/50Hz		IP Rating	55	
Rated Motor Current	328	A (In) @ 60Hz		Insulation Class	F	
	397	A (In) @ 50Hz		Tropicalization	1	
FL Current @ 208V	None	A (In) @ 60Hz		Duty	Cont.	
Service Factor	1.15	@ 60Hz		Cable Entry	None	
	1.15	@ 50Hz		Feet Removable	0	
KVA Code	G	60Hz		Double Drilled	0	
	D	50Hz		Frame Material	Cast	
Nominal Efficiency	96.2	% @ 60Hz		Shaft Material	None	
	94.9	% @ 50Hz		Coating	RAL	7024
Nominal Power Factor	0.89	cosθ @ 60Hz				
Full Load Torque Ft-Lb	S			Mechanical Data		
Load Data	Trq Ft-Lb	Trq %FL	Current Amps	Bearing DE Side		6319
Locked Rotor				Bearing NDE Side		6319
Breakdown	520.1133389	200.0	-	Comp Ring (wavey washer)		DE
Pull Up	333.7535106	197.0	-	Weight		600.8625 Lbs
Load Data	RPM	Eff %	Current Amps	Moment of Inertia		None kg.m3
125% of FL	1774.4	93.41	82.79	Site Conditions		
75% of FL	1785.5	94.29	52.63	Temp Rise @ Full Load °C		None @ 60Hz
50% of FL	1790.5	93.78	40.19	Ambient Temperature °C		40
No Load	1199.0	0	26.53	Altitude Above Sea Level (M)		1000
Brake Torque (N-M)	100.0	<b>Loaded Torque Curves</b>		None		
Brake Coil Voltage	None	<b>P1 = Output Power (KW), S = Slip (% of Sync RPM), η = Efficiency (%), cosφ = Power Factor</b>				

<b>CT VFD Range</b>		
Haz Loc Rating		
Options:		
<b>UL File Number</b>		
<b>CSA File Number</b>		
<b>DOE File Number</b>		
<b>CE APPROVAL</b>		
<b>Wiring Diagram</b>	<b>NEMA-3-6-D</b>	

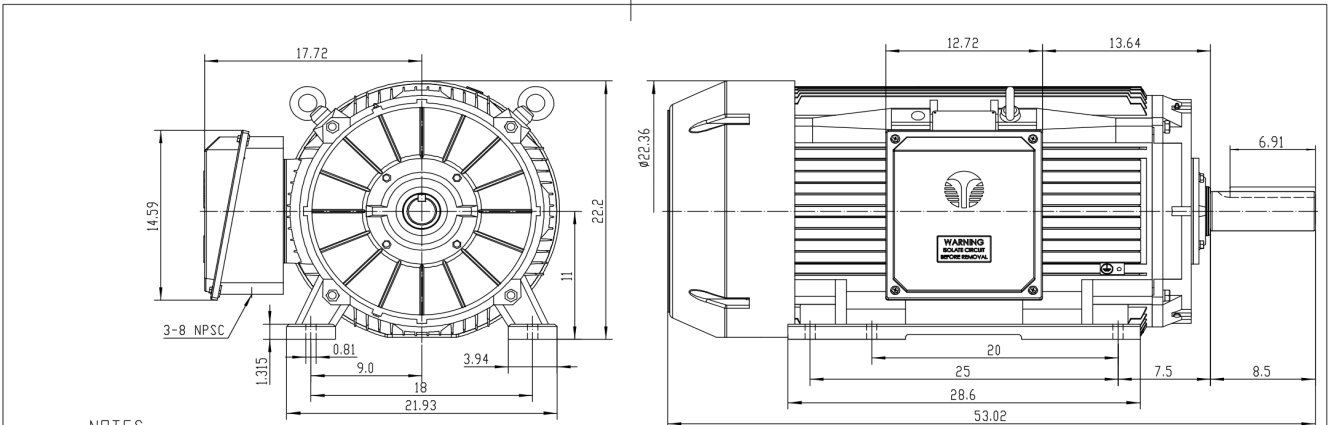
Techtop Industries -2815 Colonnades Court - Peachtree Corners, GA 30071 - Phone: (678) 436-5540



<b>Model Number:</b>	SD3-449T-4-BR-E-300
<b>MFG PN:</b>	
<b>List Price:</b>	37061

Dimensional Drawing (For Reference Only)

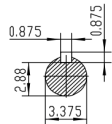
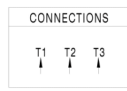
841-449T300U4B



NOTES:

- All Cast Iron Construction
- Design B
- IP55 Labyrinth seals on DE and ODE
- H Class Insulation System
- Max Winding Temperature rise 80°C
- Max bearing temperature rise 45°C for 4 pole and 50°C for 2 pole motors when direct coupled.
- Regreasable bearings
- External Grounding provisions
- Maximum Foot flatness deviation .127 mm
- Conductive Polymer Cooling Fan
- Diagonally Split Conduit Box rotatable in 90° Increments
- Lead seals in conduit box
- Maximum no load sound power 85 dBA(2 pole), Maximum no load sound power 70 dBA(4 pole), Maximum no load sound power 64 dBA(6 pole).
- No Load Motor Vibration not to exceed
  - Radial 60HZ - 2.03mm/s (2,4 pole) and 1.52mm/s (6 pole)
  - Axial 60HZ - 1.52mm/s
- 300 series Stainless Steel hardware
- Epoxy Coating meeting ASTM B117-97 for 96 h
- All internal surfaces coated with anti-corrosion coating.
- Internal Shaft Grounding brush installed on drive end.
- No Load test report included with motor

<b>TECHTOP IEEC 841</b>		SEVERE DUTY ELECTRIC MOTOR	
MODEL: SD3-449T-4-RR-E-300	TECHTOP.COM		
NEMA HP: 300	50 Hz	MFG PN: T 449T300U4B	
RPM: 1785	1480	SER # 1603102008	
VOLTS(50): 480	360	DESIGN: B	
FLA: 328	397	FRAME: 449T	
SF: 1.15	1	ENCL: TEFC	
KVA CODE: 0	D	IP: 55	
NOM EFF: 0.952		DUTY: Cont	
		INS CL: H	
		AMB: 40 °C	
		WEIGHT: 2385.8 lbs	
		224810	
		MADE IN CHINA	



<b>TECHTOP</b>		NEMA TEFC 449T-300HP-4P	
ShangHai HIMAK Electrical Machinery CO., LTD		IEEC-841 UNITS:INCH	
Design	Standard	NO:	CY260.A20.009
Checker	Allow	STEP MARK	1:7 SORT Cast iron Motor
Auditing	Date		

Components			
Item	Model	Description	List Price
C-Face Kit			
D-Flange Kit			
DE Endplate Kit			
NDE Endplate Kit			
Junction Box			
Cooling Fan Cover			
Cooling Fan			
Replacement Feet			
DE Bearing Retainer Kit			
NDE Bearing Retainer Kit			

