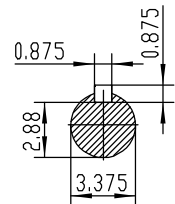
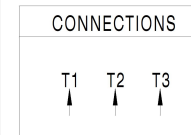


NOTES:

1. All Cast Iron Construction
2. Design B
3. IP55 Labyrinth seals on DE and DDE
4. H Class Insulation System
5. Max Winding Temperature rise 80°C
6. Max bearing temperature rise 45°C for 4 pole and 50°C for 2 pole motors when direct coupled.
7. Regreasable bearings
8. External Grounding provisions
9. Maximum foot flatness deviation .127 mm
10. Conductive Polymer Cooling Fan
11. Diagonally Split Conduit Box rotatable in 90° Increments
12. Lead seals in conduit box
13. Maximum no load sound power 85 dBA(2 pole),
Maximum no load sound power 70 dBA(4 pole),
Maximum no load sound power 64 dBA(6 pole).
14. No Load Motor Vibration not to exceed
 - a.Radial 60HZ - 2.03mm/s (2,4 pole) and 1.52mm/s (6 pole)
 - b.Axial 60HZ - 1.52mm/s
15. 300 series Stainless Steel hardware
16. Epoxy Coating meeting ASTM B117-97 for 96 h
17. All internal surfaces coated with anti-corrosion coating.
18. Internal Shaft Grounding brush installed on drive end.
19. No Load test report included with motor

		TECHTOP.COM	
		T 449T300U4B	
MODEL	SD3-449T-4-RR-E-300	MFG PN	1603102058
NEMA Premium	60 Hz 50 Hz	SER #	0688002
HP	300 300	DESIGN	B
RPM	1785 1480	FRAME	449T
VOLT(3Ø)	460 380	ENCL	TEFC
FLA	328 397	IP	55
SF	1.15 1	DUTY	Cont.
KVA CODE	G D	INS CL	H
NOM.EFF	0.962	AMB	40 °C
BEARING SIZE		WEIGHT	2385.8 lbs
DE NU349		MADE IN CHINA	
ARRESTOR CODE: 8319-C3		Energy Verified 224693	
VFD 15:1 CT-1.0 SF			



		NEMA TEFC 449T-300HP-4P	
		IEEE-841 UNITS:INCH	
ShangHai HIMAK Electrical Machinery CO., LTD		NO:	CY260.A20.009
Design		STEP MARK	1:7
Checker	Allow	SORT	Cast iron Motor
Auditing	Date		