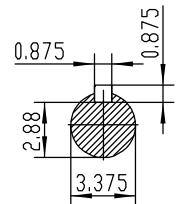
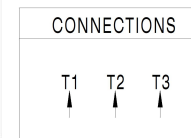


**NOTES:**

1. All Cast Iron Construction
2. Design B
3. IP55 Labyrinth seals on DE and DDE
4. H Class Insulation System
5. Max Winding Temperature rise 80°C
6. Max bearing temperature rise 45°C for 4 pole and 50°C for 2 pole motors when direct coupled.
7. Regreasable bearings
8. External Grounding provisions
9. Maximum foot flatness deviation .127 mm
10. Conductive Polymer Cooling Fan
11. Diagonally Split Conduit Box rotatable in 90° Increments
12. Lead seals in conduit box
13. Maximum no load sound power 85 dBA(2 pole),  
Maximum no load sound power 70 dBA(4 pole),  
Maximum no load sound power 64 dBA(6 pole).
14. No Load Motor Vibration not to exceed
  - a.Radial 60HZ - 2.03mm/s (2,4 pole) and 1.52mm/s (6 pole)
  - b.Axial 60HZ - 1.52mm/s
15. 300 series Stainless Steel hardware
16. Epoxy Coating meeting ASTM B117-97 for 96 h
17. All internal surfaces coated with anti-corrosion coating.
18. Internal Shaft Grounding brush installed on drive end.
19. No Load test report included with motor

		TECHTOP.COM	
		T 447T200U4B	
MODEL	SD3-447T-4-RR-E-200	MFG PN	1603102054
NEMA Premium	60 Hz 50 Hz	SER #	0688002
HP	200 200	DESIGN	B
RPM	1785 1480	FRAME	447T
VOLT(3Ø)	460 380	ENCL	TEFC
FLA	219 270	IP	55
SF	1.15 1	DUTY	Cont.
KVA CODE	G E	INS CL	H
NOM.EFF	0.982	DE	NU 319
		AMB	40 °C
		WEIGHT	2108.5 lbs
		BEARING SIZE	40
		ARRESTOR CODE	6318-C3
		VFD	15:1 CT-1.0 SF
			MADE IN CHINA



		NEMA TEFC 447T-200HP-4P	
		IEEE-841 UNITS:INCH	
ShangHai HIMAK Electrical Machinery CO.,.LTD		NO:	CY260.A20.007
Design		STEP MARK	1:7
Checker	Allow	SORT	Cast iron Motor
Auditing	Date		