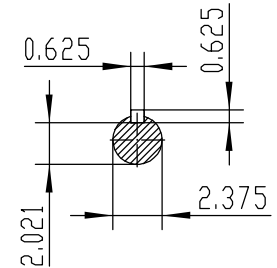
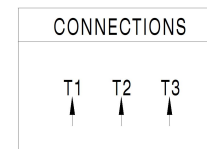


NOTES:

1. All Cast Iron Construction
2. Design B
3. IP55 Labyrinth seals on DE and ODE
4. H Class Insulation System
5. Max Winding Temperature rise 80°C
6. Max bearing temperature rise 45°C for 4 pole and 50°C for 2 pole motors when direct coupled.
7. Regreasable bearings
8. External Grounding provisions
9. Maximum foot flatness deviation .127 mm
10. Conductive Polymer Cooling Fan
11. Diagonally Split Conduit Box rotatable in 90° Increments
12. Lead seals in conduit box
13. Maximum no load sound power 85 dBA(2 pole),
Maximum no load sound power 70 dBA(4 pole),
Maximum no load sound power 64 dBA(6 pole).
14. No Load Motor Vibration not to exceed
a.Radial 60HZ - 2.03mm/s (2,4 pole) and 1.52mm/s (6 pole)
b.Axial 60HZ - 1.52mm/s
15. 300 series Stainless Steel hardware
16. Epoxy Coating meeting ASTM B117-97 for 96 h
17. All internal surfaces coated with anti-corrosion coating.
18. Internal Shaft Grounding brush installed on drive end.
19. No Load test report included with motor

TECHTOP IEEE 841 SEVERE DUTY ELECTRIC MOTOR	
MODEL SD3-445TS-2-BR-E-150	TECHTOP.COM
NEMA Premium HP 150 50 Hz 150	MFG PN T 445TS150U2B
RPM 3565 2960	SER # 1603102053
VOLT(3Ø) 460 380	DATE 0688002
FLA 162 193	DESIGN B
SF 1.15 1	FRAME 445TS
KVA CODE G E	ENCL TEFC
NOM.EFF 0.950	IP 55
	DUTY Cont.
	INS CL H
	AMB 40 °C
	WEIGHT 1597 lbs
	MADE IN CHINA



TECHTOP		NEMA TEFC 445TS-150HP-2P	
ShangHai HIMAK Electrical Machinery CO., LTD		IEEE-841 UNITS:INCH	
Design	Standard	NO:	CY260.A20.002
Checker	Allow	STEP MARK	1:6.5 SORT Cast iron Motor
Auditing	Date		