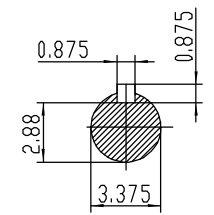
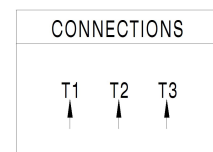


NOTES:

1. All Cast Iron Construction
2. Design B
3. IP55 Labyrinth seals on DE and ODE
4. H Class Insulation System
5. Max Winding Temperature rise 80°C
6. Max bearing temperature rise 45°C for 4 pole and 50°C for 2 pole motors when direct coupled.
7. Regreasable bearings
8. External Grounding provisions
9. Maximum foot flatness deviation .127 mm
10. Conductive Polymer Cooling Fan
11. Diagonally Split Conduit Box rotatable in 90° Increments
12. Lead seals in conduit box
13. Maximum no load sound power 85 dBA(2 pole), Maximum no load sound power 70 dBA(4 pole), Maximum no load sound power 64 dBA(6 pole).
14. No Load Motor Vibration not to exceed
 - a.Radial 60HZ - 2.03mm/s (2,4 pole) and 1.52mm/s (6 pole)
 - b.Axial 60HZ - 1.52mm/s
15. 300 series Stainless Steel hardware
16. Epoxy Coating meeting ASTM B117-97 for 96 h
17. All internal surfaces coated with anti-corrosion coating.
18. Internal Shaft Grounding brush installed on drive end.
19. No Load test report included with motor

TECHTOP IEEE 841 SEVERE DUTY ELECTRIC MOTOR

MODEL SD3-444T-6-RR-E-100		TECHTOP.COM	
NEMA Premium 60 Hz 50 Hz		MFG PN	T 444T100U6B
HP	100 100	SER #	1603102049
RPM	1190 985	DATE	0688002
VOLT(3Ø)	460 380	DESIGN	B
FLA	119 142	FRAME	444T
SF	1.15 1	ENCL	TEFC
KVA CODE	G F	IP	55
NOM.EFF	0.950	DUTY	Cont.
BEARING SIZE		INS CL	H
ARC ARRESTOR DE NUST9 (DDE) 6319-23		AMB	40 °C
VFD 15:1 CT-1.0 SF		WEIGHT	1643.3 lbs
		MADE IN CHINA	



TECHTOP		NEMA TEFC 444T-100HP-6P	
ShangHai HIMAK Electrical Machinery CO., LTD		IEEE-841 UNITS:INCH	
Design		NO:	CY260.A20.010
Checker		STEP MARK	1:6.5
Auditing			SORT Cast iron Motor
	Standard		
	Allow		
	Date		