

NOTES:

1. All Cast Iron Construction
2. Design B
3. IP55 Labyrinth seals on DE and ODE
4. H Class Insulation System
5. Max Winding Temperature rise 80°C
6. Max bearing temperature rise 45°C for 4 pole and 50°C for 2 pole motors when direct coupled.
7. Regreasable bearings
8. External Grounding provisions
9. Maximum foot flatness deviation .127 mm
10. Conductive Polymer Cooling Fan
11. Diagonally Split Conduit Box rotatable in 90° Increments
12. Lead seals in conduit box
13. Maximum no load sound power 85 dBA(2 pole),
Maximum no load sound power 70 dBA(4 pole),
Maximum no load sound power 64 dBA(6 pole).
14. No Load Motor Vibration not to exceed
a.Radial 60HZ - 2.03mm/s (2,4 pole) and 1.52mm/s (6 pole)
b.Axial 60HZ - 1.52mm/s
15. 300 series Stainless Steel hardware
16. Epoxy Coating meeting ASTM B117-97 for 96 h
17. All internal surfaces coated with anti-corrosion coating.
18. Internal Shaft Grounding brush installed on drive end.
19. No Load test report included with motor

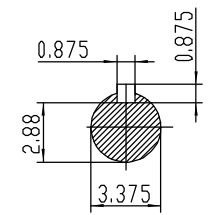
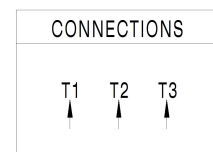
TECHTOP IEEE 841 SEVERE DUTY ELECTRIC MOTOR

MODEL	SD3-444T-4-BR-E-125		TECHTOP.COM
NEMA Premium	60 Hz	50 Hz	T 444T125U4B
HP	125	125	SER # 1603102048
RPM	1785	1480	DATE 0688002
VOLT(3Ø)	460	380	DESIGN B
FLA	138	170	FRAME 444T
SF	1.15	1	ENCL TEFC
KVA CODE	G	E	IP 55
NOM.EFF	0.954		DUTY Cont.
			INS CL H
			AMB 40 °C
			WEIGHT 1533 lbs
			MADE IN CHINA

BEARING SIZE: DE 6319-C3, ODE 6319-23

ARC ARRESTOR VFD 15:1 CT-1.0 SF

Energy Efficient 224693



<p>ShangHai HIMAK Electrical Machinery CO., LTD</p>		NEMA TEFC 444T-125HP-4P	
		IEEE-841 UNITS:INCH	
Design	Standard	NO:	CY260.A20.005
Checker	Allow	STEP MARK	1:6.5 SORT Cast iron Motor
Auditing	Date		