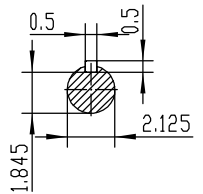
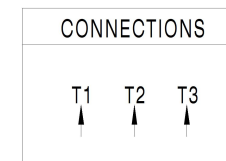


**NOTES:**

1. All Cast Iron Construction
2. Design B
3. IP55 Labyrinth seals on DE and ODE
4. H Class Insulation System
5. Max Winding Temperature rise 80°C
6. Max bearing temperature rise 45°C for 4 pole and 50°C for 2 pole motors when direct coupled.
7. Regreasable bearings
8. External Grounding provisions
9. Maximum foot flatness deviation .127 mm
10. Conductive Polymer Cooling Fan
11. Diagonally Split Conduit Box rotatable in 90° Increments
12. Lead seals in conduit box
13. Maximum no load sound power 85 dBA(2 pole),  
Maximum no load sound power 70 dBA(4 pole),  
Maximum no load sound power 64 dBA(6 pole).
14. No Load Motor Vibration not to exceed
  - a.Radial 60HZ - 2.03mm/s (2,4 pole) and 1.52mm/s (6 pole)
  - b.Axial 60HZ - 1.52mm/s
15. 300 series Stainless Steel hardware
16. Epoxy Coating meeting ASTM B117-97 for 96 h
17. All internal surfaces coated with anti-corrosion coating.
18. Internal Shaft Grounding brush installed on drive end.
19. No Load test report included with motor

<b>TECHTOP</b> IEEE 841		SEVERE DUTY ELECTRIC MOTOR	
MODEL SD3-405TS-2-BR-E-100		TECHTOP.COM	
NEMA Premium 60 Hz 50 Hz		MFG PN	T 405TS100U2B
HP	100 100	SER #	1603102047
RPM	3560 2940	DATE	0688002
VOLT(3Ø)	460 380	DESIGN	B
FLA	112 140	FRAME	405TS
SF	1.15 1	ENCL	TEFC
KVA CODE	G C	IP	55
NOM.EFF	0.941	DUTY	Cont.
ARC ARRESTOR DE 8314-C3 ODE 8314-C3		INS CL	H
VFD 15:1 CT-1.0 SF		AMB	40 °C
		WEIGHT	1059.4 lbs
		MADE IN CHINA	



 ShangHai HIMAK Electrical Machinery CO., LTD		NEMA TEFC 405TS-100HP-2P IEEE-841 UNITS:INCH					
		NO:	CY259.A20.002				
Design		Standard		STEP MARK	1:6	SORT	Cast iron Motor
Checker		Allow					
Auditing		Date					