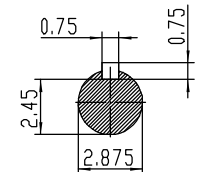
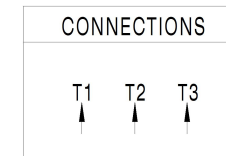


NOTES:

1. All Cast Iron Construction
2. Design B
3. IP55 Labyrinth seals on DE and ODE
4. H Class Insulation System
5. Max Winding Temperature rise 80°C
6. Max bearing temperature rise 45°C for 4 pole and 50°C for 2 pole motors when direct coupled.
7. Regreasable bearings
8. External Grounding provisions
9. Maximum foot flatness deviation .127 mm
10. Conductive Polymer Cooling Fan
11. Diagonally Split Conduit Box rotatable in 90° Increments
12. Lead seals in conduit box
13. Maximum no load sound power 85 dBA(2 pole),
Maximum no load sound power 70 dBA(4 pole),
Maximum no load sound power 64 dBA(6 pole).
14. No Load Motor Vibration not to exceed
 - a.Radial 60HZ - 2.03mm/s (2,4 pole) and 1.52mm/s (6 pole)
 - b.Axial 60HZ - 1.52mm/s
15. 300 series Stainless Steel hardware
16. Epoxy Coating meeting ASTM B117-97 for 96 h
17. All internal surfaces coated with anti-corrosion coating.
18. Internal Shaft Grounding brush installed on drive end.
19. No Load test report included with motor

TECHTOP IEEE 841 SEVERE DUTY ELECTRIC MOTOR	
MODEL SD3-405T-6-RR-E-75	TECHTOP.COM
NEMA Premium 60 Hz 50 Hz	MFG PN T 405T75U6B
HP 75 75	SER # 1603102046
RPM 1185 980	DATE 0688002
VOLT(3Ø) 460 380	DESIGN B
FLA 90.0 108	FRAME 405T
SF 1.15 1	ENCL TEFC
KVA CODE G E	IP 55
NOM.EFF 0.945	DUTY Cont.
BEARING SIZE	INS CL H
ARC ARRESTOR DE NU818 ODE 8314-C3	AMB 40 °C
VFD 15:1 CT-1.0 SF	WEIGHT 1083.6 lbs
	MADE IN CHINA



 ShangHai HIMAK Electrical Machinery CO., LTD		NEMA TEFC 405T-75HP-6P	
		IEEE-841 UNITS:INCH	
Design	Standard	NO:	CY259.A20.004
Checker	Allow	STEP MARK	1:6 SORT Cast iron Motor
Auditing	Date		