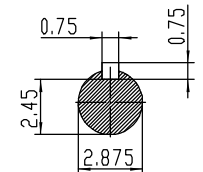
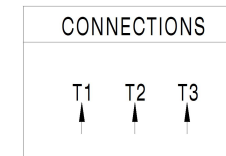


NOTES:

1. All Cast Iron Construction
2. Design B
3. IP55 Labyrinth seals on DE and ODE
4. H Class Insulation System
5. Max Winding Temperature rise 80°C
6. Max bearing temperature rise 45°C for 4 pole and 50°C for 2 pole motors when direct coupled.
7. Regreasable bearings
8. External Grounding provisions
9. Maximum foot flatness deviation .127 mm
10. Conductive Polymer Cooling Fan
11. Diagonally Split Conduit Box rotatable in 90° Increments
12. Lead seals in conduit box
13. Maximum no load sound power 85 dBA(2 pole),
Maximum no load sound power 70 dBA(4 pole),
Maximum no load sound power 64 dBA(6 pole).
14. No Load Motor Vibration not to exceed
 - a.Radial 60HZ - 2.03mm/s (2,4 pole) and 1.52mm/s (6 pole)
 - b.Axial 60HZ - 1.52mm/s
15. 300 series Stainless Steel hardware
16. Epoxy Coating meeting ASTM B117-97 for 96 h
17. All internal surfaces coated with anti-corrosion coating.
18. Internal Shaft Grounding brush installed on drive end.
19. No Load test report included with motor

TECHTOP IEEE 841 SEVERE DUTY ELECTRIC MOTOR	
MODEL SD3-404T-6-RR-E-60	TECHTOP.COM
NEMA Premium	60 Hz 50 Hz
HP 60	60
RPM 1185	980
VOLT(3Ø) 460	380
FLA 72.0	88.0
SF 1.15	1
KVA CODE G	E
NOM.EFF 0.945	
BEARING SIZE	
ARC ARRESTOR DE NU318 CODE 8314-C3	
VFD 15:1 CT-1.0 SF	
MFG PN T 404T60U6B	
SER # 1603102044	
DATE 0688002	
DESIGN B	
FRAME 404T	CC096A
ENCL TEFC	
IP 55	
DUTY Cont.	
INS CL H	
AMB 40 °C	
WEIGHT 1014 lbs	
MADE IN CHINA	



 ShangHai HIMAK Electrical Machinery CO., LTD		NEMA TEFC 404T-60HP-6P	
		IEEE-841 UNITS:INCH	
Design	Standard	NO:	CY259.A20.001
Checker	Allow	STEP MARK	1:6 SORT Cast iron Motor
Auditing	Date		