

NOTES:

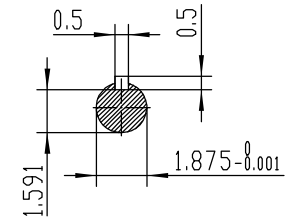
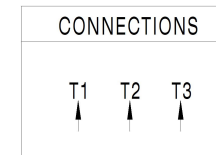
1. All Cast Iron Construction
2. Design B
3. IP55 Labyrinth seals on DE and ODE
4. H Class Insulation System
5. Max Winding Temperature rise 80°C
6. Max bearing temperature rise 45°C for 4 pole and 50°C for 2 pole motors when direct coupled.
7. Regreasable bearings
8. External Grounding provisions
9. Maximum foot flatness deviation .127 mm
10. Conductive Polymer Cooling Fan
11. Diagonally Split Conduit Box rotatable in 90° Increments
12. Lead seals in conduit box
13. Maximum no load sound power 85 dBA(2 pole),
Maximum no load sound power 70 dBA(4 pole),
Maximum no load sound power 64 dBA(6 pole).
14. No Load Motor Vibration not to exceed
a.Radial 60HZ - 2.03mm/s (2,4 pole) and 1.52mm/s (6 pole)
b.Axial 60HZ - 1.52mm/s
15. 300 series Stainless Steel hardware
16. Epoxy Coating meeting ASTM B117-97 for 96 h
17. All internal surfaces coated with anti-corrosion coating.
18. Internal Shaft Grounding brush installed on drive end.
19. No Load test report included with motor

TECHTOP IEE 841 SEVERE DUTY ELECTRIC MOTOR

MODEL	SD3-365TS-2-BR-E-75	TECHTOP.COM
NEMA	60 Hz 50 Hz	MFG PN
HP	75 75	SER #
RPM	3560 2940	DATE
VOLT(3Ø)	460 360	DESIGN
FLA	82.5 101	FRAME
SF	1.15 1	ENCL
KVA CODE	G E	IP
NOM.EFF	0.936	DUTY
		Cont.
		INS CL
		AMB
		WEIGHT
		867.7 lbs

TECHTOP.COM T 365TS75U2B
SER # 1603102043
DATE 0688002
DESIGN B
FRAME 365TS
ENCL TEFC
IP 55
DUTY Cont.
INS CL H
AMB 40 °C
WEIGHT 867.7 lbs
MADE IN CHINA 224893

BEARING SIZE DE 8313-C3
ARRESTOR CODE 8313-C3
VFD 15:1 CT-1.0 SF



<p>ShangHai HIMAK Electrical Machinery CO., LTD</p>		NEMA TEFC 365TS-75HP-2P IEEE-841 UNITS:INCH			
		NO: CY258.A20.004			
Design		Standard		STEP MARK	1:5
Checker		Allow			
Auditing		Date			
					SORT Cast iron Motor