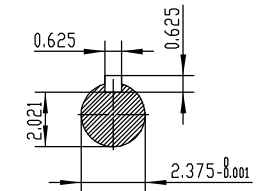
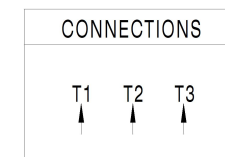


NOTES:

1. All Cast Iron Construction
2. Design B
3. IP55 Labyrinth seals on DE and ODE
4. H Class Insulation System
5. Max Winding Temperature rise 80°C
6. Max bearing temperature rise 45°C for 4 pole and 50°C for 2 pole motors when direct coupled.
7. Regreasable bearings
8. External Grounding provisions
9. Maximum foot flatness deviation .127 mm
10. Conductive Polymer Cooling Fan
11. Diagonally Split Conduit Box rotatable in 90° Increments
12. Lead seals in conduit box
13. Maximum no load sound power 85 dBA(2 pole),
Maximum no load sound power 70 dBA(4 pole),
Maximum no load sound power 64 dBA(6 pole).
14. No Load Motor Vibration not to exceed
a.Radial 60HZ - 2.03mm/s (2,4 pole) and 1.52mm/s (6 pole)
b.Axial 60HZ - 1.52mm/s
15. 300 series Stainless Steel hardware
16. Epoxy Coating meeting ASTM B117-97 for 96 h
17. All internal surfaces coated with anti-corrosion coating.
18. Internal Shaft Grounding brush installed on drive end.
19. No Load test report included with motor

TECHTOP IEEE 841 SEVERE DUTY ELECTRIC MOTOR

MODEL SD3-364T-6-BR-E-40		TECHTOP.COM	
NEMA Premium HP	60 Hz 40	50 Hz 40	MFG PN T 364T40U6B
RPM	1180	975	SER # 1603102039
VOLT(3Ø)	460	380	DATE 0688002
FLA	48.0	58.7	DESIGN B
SF	1.15	1	FRAME 364T
KVA CODE	G	C	ENCL TEFC
NOM.EFF	0.941		IP 55
			DUTY Cont.
			INS CL H
			AMB 40 °C
			WEIGHT 758.5 lbs
BEARING SIZE DE 6313-C3		ARRESTOR CODE 6313-C3	
VFD 15:1 CT-1.0 SF		MADE IN CHINA	



<p>ShangHai HIMAK Electrical Machinery CO., LTD</p>		NEMA TEFC 364T-40HP-6P	
		IEEE-841 UNITS:INCH	
Design	Standard	NO:	CY258.A20.003
Checker	Allow	STEP MARK	1:5 SORT Cast iron Motor
Auditing	Date		