

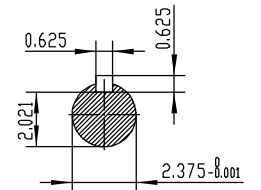
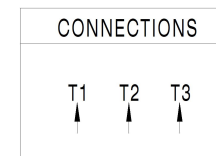
**NOTES:**

1. All Cast Iron Construction
2. Design B
3. IP55 Labyrinth seals on DE and ODE
4. H Class Insulation System
5. Max Winding Temperature rise 80°C
6. Max bearing temperature rise 45°C for 4 pole and 50°C for 2 pole motors when direct coupled.
7. Regreasable bearings
8. External Grounding provisions
9. Maximum foot flatness deviation .127 mm
10. Conductive Polymer Cooling Fan
11. Diagonally Split Conduit Box rotatable in 90° Increments
12. Lead seals in conduit box
13. Maximum no load sound power 85 dBA(2 pole),  
Maximum no load sound power 70 dBA(4 pole),  
Maximum no load sound power 64 dBA(6 pole).
14. No Load Motor Vibration not to exceed  
a.Radial 60HZ - 2.03mm/s (2,4 pole) and 1.52mm/s (6 pole)  
b.Axial 60HZ - 1.52mm/s
15. 300 series Stainless Steel hardware
16. Epoxy Coating meeting ASTM B117-97 for 96 h
17. All internal surfaces coated with anti-corrosion coating.
18. Internal Shaft Grounding brush installed on drive end.
19. No Load test report included with motor

**TECHTOP IEEE 841 SEVERE DUTY ELECTRIC MOTOR**

MODEL SD3-364T-4-BR-E-60		TECHTOP.COM	
NEMA Premium HP	60 Hz 60	MFG PN	T 364T60U4B
RPM	1775 1460	SER #	1603102038
VOLT(3Ø)	460 380	DATE	0688002
FLA	68.8 85.0	DESIGN	B
SF	1.15 1	FRAME	364T
KVA CODE	G E	ENCL	TEFC
NOM.EFF	0.950	IP	55
		DUTY	Cont.
		INS CL	H
		AMB	40 °C
		WEIGHT	815.9 lbs
			Energy Verified 22493

BEARING SIZE DE 6313-C3 ODE 6313-C3  
VFD 15:1 CT-1.0 SF MADE IN CHINA



<p>ShangHai HIMAK Electrical Machinery CO., LTD</p>		NEMA TEFC 364T-60HP-4P IEEE-841 UNITS:INCH			
		NO:	CY258.A20.002		
Design		Standard		STEP MARK	1:5
Checker		Allow		SORT	Cast iron Motor
Auditing		Date			