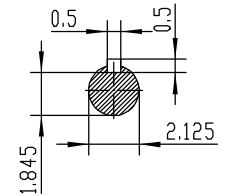
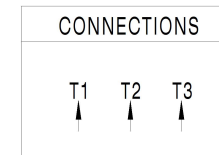


NOTES:

1. All Cast Iron Construction
2. Design B
3. IP55 Labyrinth seals on DE and ODE
4. H Class Insulation System
5. Max Winding Temperature rise 80°C
6. Max bearing temperature rise 45°C for 4 pole and 50°C for 2 pole motors when direct coupled.
7. Regreasable bearings
8. External Grounding provisions
9. Maximum foot flatness deviation .127 mm
10. Conductive Polymer Cooling Fan
11. Diagonally Split Conduit Box rotatable in 90° Increments
12. Lead seals in conduit box
13. Maximum no load sound power 85 dBA(2 pole),
Maximum no load sound power 70 dBA(4 pole),
Maximum no load sound power 64 dBA(6 pole).
14. No Load Motor Vibration not to exceed
a.Radial 60HZ - 2.03mm/s (2,4 pole) and 1.52mm/s (6 pole)
b.Axial 60HZ - 1.52mm/s
15. 300 series Stainless Steel hardware
16. Epoxy Coating meeting ASTM B117-97 for 96 h
17. All internal surfaces coated with anti-corrosion coating.
18. Internal Shaft Grounding brush installed on drive end.
19. No Load test report included with motor

TECHTOP		IEEE 841		SEVERE DUTY	
				ELECTRIC MOTOR	
MODEL SD3-326T-6-BR-E-30		TECHTOP.COM			
NEMA Premium 60 Hz 50 Hz		MFG PN T 326T30U6B			
HP 30 30		SER # 1603102036			
RPM 1175 960		DATE 0688002			
VOLT(3Ø) 480 380		DESIGN B		CE	
FLA 38.2 47.5		FRAME 326T		CCC096A	
SF 1.25 1		ENCL TEFC		E30593	
KVA CODE G C		IP 55		Energy Efficient 224693	
NOM.EFF 0.930		DUTY Cont.			
BEARING SIZE		INS CL H			
ARC ARRESTOR DE 6312-C3		AMB 40 °C			
VFD 16:1 CT-1.0 SF		WEIGHT 568.9 lbs			
		MADE IN CHINA			



 ShangHai HIMAK Electrical Machinery CO., LTD			NEMA TEFC 326T-30HP-6P		
			IEEE-841 UNITS:INCH		
Design		Standard	NO:		CY257.A20.006
Checker		Allow	STEP MARK		1:5 SORT Cast iron Motor
Auditing		Date			