



| | |
|---------------|--------------------|
| Model Number: | SD3-326T-4-BR-E-50 |
| MFG PN: | 6040 |
| List Price: | |

All data shown at HIGH voltage setting

Format: STD 3 Phase

| Electrical Data | | | | General Data | | |
|-------------------------------|-------------|---|--------------|------------------------------|----------|--------|
| Rated Motor Output Power | 50.0 | HP | | Frame Size | 326T | |
| Rated Motor Speed | 1770 | r/min 60Hz | | Enclosure | TEFC | |
| | 1455 | r/min 50Hz | | Mounting | Rigid | |
| Rated Motor Voltage (3 Phase) | 460 | V/60Hz | | NEMA Design | B | |
| | 380 | V/50Hz | | IP Rating | 55 | |
| Rated Motor Current | 56.3 | A (In) @ 60Hz | | Insulation Class | F | |
| | 69 | A (In) @ 50Hz | | Tropicalization | 1 | |
| FL Current @ 208V | None | A (In) @ 60Hz | | Duty | Cont. | |
| Service Factor | 1.25 | @ 60Hz | | Cable Entry | None | |
| | 1.25 | @ 50Hz | | Feet Removable | 0 | |
| KVA Code | G | 60Hz | | Double Drilled | 0 | |
| | D | 50Hz | | Frame Material | Cast | |
| Nominal Efficiency | 94.5 | % @ 60Hz | | Shaft Material | None | |
| | 92.0 | % @ 50Hz | | Coating | RAL | 7024 |
| Nominal Power Factor | 0.88 | cosθ @ 60Hz | | | | |
| Full Load Torque Ft-Lb | S | | | Mechanical Data | | |
| Load Data | Trq Ft-Lb | Trq %FL | Current Amps | Bearing DE Side | 6312 | |
| Locked Rotor | | | | Bearing NDE Side | 6312 | |
| Breakdown | 520.1133389 | 210.0 | - | Comp Ring (wavy washer) | DE | |
| Pull Up | 333.7535106 | 197.0 | - | Weight | 600.8625 | Lbs |
| Load Data | RPM | Eff % | Current Amps | Moment of Inertia | None | kg.m3 |
| 125% of FL | 1774.4 | 93.41 | 82.79 | Site Conditions | | |
| 75% of FL | 1785.5 | 94.29 | 52.63 | Temp Rise @ Full Load °C | None | @ 60Hz |
| 50% of FL | 1790.5 | 93.78 | 40.19 | Ambient Temperature °C | 40 | |
| No Load | 1199.0 | 0 | 26.53 | Altitude Above Sea Level (M) | 1000 | |
| Brake Torque (N-M) | 100.0 | Loaded Torque Curves | | None | | |
| Brake Coil Voltage | None | P1 = Output Power (KW), S = Slip (% of Sync RPM), η = Efficiency (%), cosφ = Power Factor | | | | |

| | |
|------------------------|-------------------|
| CT VFD Range | |
| Haz Loc Rating | |
| Options: | |
| UL File Number | |
| CSA File Number | |
| DOE File Number | |
| CE APPROVAL | |
| Wiring Diagram | NEMA-3-6-D |

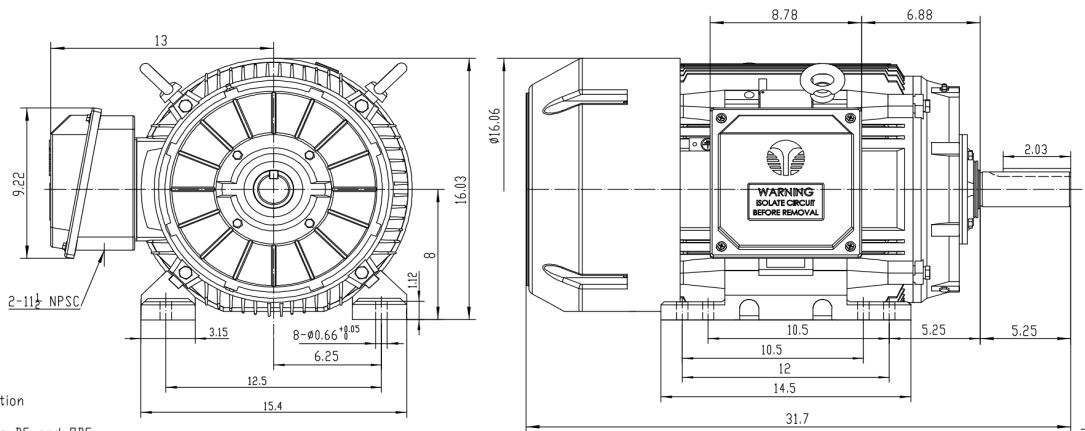
Techtop Industries -2815 Colonnades Court - Peachtree Corners, GA 30071 - Phone: (678) 436-5540



| | |
|----------------------|--------------------|
| Model Number: | SD3-326T-4-BR-E-50 |
| MFG PN: | |
| List Price: | 6040 |

Dimensional Drawing (For Reference Only)

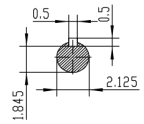
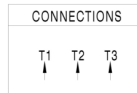
841-326T50U4B



NOTES:

- All Cast Iron Construction
- Design B
- IP55 Labyrinth seals on DE and ODE
- H Class Insulation System
- Max Winding Temperature rise 80°C
- Max bearing temperature rise 45°C for 4 pole and 50°C for 2 pole motors when direct coupled.
- Regreasable bearings
- External Grounding provisions
- Maximum foot flatness deviation .127 mm
- Conductive Polymer Cooling Fan
- Diagonally Split Conduit Box rotatable in 90° Increments
- Lead seals in conduit box
- Maximum no load sound power 85 dBA(2 pole), Maximum no load sound power 70 dBA(4 pole), Maximum no load sound power 64 dBA(6 pole).
- No Load Motor Vibration not to exceed
a.Radial 60HZ - 2.03mm/s (2,4 pole) and 1.52mm/s (6 pole)
b.Axial 60HZ - 1.52mm/s
- 300 series Stainless Steel hardware
- Epoxy Coating meeting ASTM B117-97 for 96 h
- All internal surfaces coated with anti-corrosion coating.
- Internal Shaft Grounding brush installed on drive end.
- No Load test report included with motor

| | |
|--|-------------|
| TECHTOP IEEE 841 SEVERE DUTY ELECTRIC MOTOR | |
| MODEL: SD3-326T-4-BR-E-50 | TECHTOP.COM |
| NEMA 326T | TECHTOP |
| HP 50 | 50 |
| RPM 1770 | 1455 |
| VOLTAGE 480 | 380 |
| FLA 56.3 | 89.9 |
| FLA 1.25 | 1 |
| SF G | D |
| KVA CODE | |
| NOM EFF 0.945 | |
| INS CL 14 | |
| AMB 40 °C | |
| WEIGHT 832.7 lbs | |
| MADE IN CHINA | |



| | | | |
|--|----------|------------------------|--------------------------|
| TECHTOP | | NEMA TEFC 326T-50HP-4P | |
| ShangHai HIMAK Electrical Machinery CO., LTD | | IEEE-841 UNITS:INCH | |
| Design | Standard | NO: | CY257.A20.005 |
| Checker | Allow | STEP MARK | 1:5 SORT Cast iron Motor |
| Auditing | Date | | |

Components

| Item | Model | Description | List Price |
|--------------------------|-------|-------------|------------|
| C-Face Kit | | | |
| D-Flange Kit | | | |
| DE Endplate Kit | | | |
| NDE Endplate Kit | | | |
| Junction Box | | | |
| Cooling Fan Cover | | | |
| Cooling Fan | | | |
| Replacement Feet | | | |
| DE Bearing Retainer Kit | | | |
| NDE Bearing Retainer Kit | | | |

