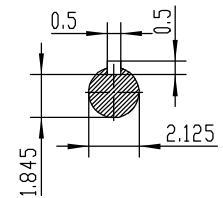
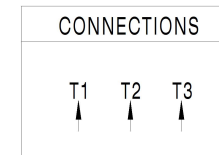


NOTES:

1. All Cast Iron Construction
2. Design B
3. IP55 Labyrinth seals on DE and ODE
4. H Class Insulation System
5. Max Winding Temperature rise 80°C
6. Max bearing temperature rise 45°C for 4 pole and 50°C for 2 pole motors when direct coupled.
7. Regreasable bearings
8. External Grounding provisions
9. Maximum foot flatness deviation .127 mm
10. Conductive Polymer Cooling Fan
11. Diagonally Split Conduit Box rotatable in 90° Increments
12. Lead seals in conduit box
13. Maximum no load sound power 85 dBA(2 pole),
Maximum no load sound power 70 dBA(4 pole),
Maximum no load sound power 64 dBA(6 pole).
14. No Load Motor Vibration not to exceed
a.Radial 60HZ - 2.03mm/s (2,4 pole) and 1.52mm/s (6 pole)
b.Axial 60HZ - 1.52mm/s
15. 300 series Stainless Steel hardware
16. Epoxy Coating meeting ASTM B117-97 for 96 h
17. All internal surfaces coated with anti-corrosion coating.
18. Internal Shaft Grounding brush installed on drive end.
19. No Load test report included with motor

TECHTOP IEEE 841 SEVERE DUTY ELECTRIC MOTOR	
MODEL: SD3-326T-4-BR-E-50	TECHTOP.COM
NEMA PREMIUM 60 Hz 50 Hz	MFG PN T 326T50U4B
HP 50 50	SER # 1603102035
RPM 1770 1455	DATE 0688002
VOLT(3Ø) 460 380	DESIGN B
FLA 56.3 69.0	FRAME 326T
SF 1.25 1	ENCL TEFC
KVA CODE G D	IP 55
NOM.EFF 0.945	DUTY Cont.
BEARING SIZE DE 6312-C3 ODE 6312-C3	INS CL H
ARC ARRESTOR VFD 15-1 CT-1.0 SF	AMB 40 °C
	WEIGHT 632.7 lbs
	MADE IN CHINA



 ShangHai HIMAK Electrical Machinery CO., LTD		NEMA TEFC 326T-50HP-4P	
		IEEE-841 UNITS:INCH	
Design		NO:	CY257.A20.005
Checker		STEP MARK	1:5 SORT Cast iron Motor
Auditing		Standard	
		Allow	
		Date	