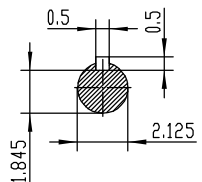
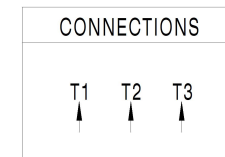


NOTES:

1. All Cast Iron Construction
2. Design B
3. IP55 Labyrinth seals on DE and DDE
4. H Class Insulation System
5. Max Winding Temperature rise 80°C
6. Max bearing temperature rise 45°C for 4 pole and 50°C for 2 pole motors when direct coupled.
7. Regreasable bearings
8. External Grounding provisions
9. Maximum foot flatness deviation .127 mm
10. Conductive Polymer Cooling Fan
11. Diagonally Split Conduit Box rotatable in 90° Increments
12. Lead seals in conduit box
13. Maximum no load sound power 85 dBA(2 pole),
Maximum no load sound power 70 dBA(4 pole),
Maximum no load sound power 64 dBA(6 pole).
14. No Load Motor Vibration not to exceed
a.Radial 60HZ - 2.03mm/s (2,4 pole) and 1.52mm/s (6 pole)
b.Axial 60HZ - 1.52mm/s
15. 300 series Stainless Steel hardware
16. Epoxy Coating meeting ASTM B117-97 for 96 h
17. All internal surfaces coated with anti-corrosion coating.
18. Internal Shaft Grounding brush installed on drive end.
19. No Load test report included with motor

TECHTOP IEEE 841		SEVERE DUTY ELECTRIC MOTOR	
MODEL SD3-324T-4-BR-E-40		TECHTOP.COM	
NEMA	60 Hz 50 Hz	MFG PN	T 324T40U4B
HP	40 40	SER #	1603102032
RPM	1770 1455	DATE	0688002
VOLT(3Ø)	480 380	DESIGN	B
FLA	45.7 50.6	FRAME	324T
SF	1.25 1	ENCL	TEFC
KVA CODE	G D	IP	55
NOM.EFF	0.941	DUTY	Cont.
ARRESTOR CODE 6312-C3		INS CL	H
VFD 15:1 CT-1.0 SF		AMB	40 °C
		WEIGHT	571 lbs
		MADE IN CHINA	



 ShangHai HIMAK Electrical Machinery CO., LTD		NEMA TEFC 324T-40HP-4P			
		IEEE-841 UNITS:INCH			
Design		Standard		NO: CY257.A20.002	
Checker		Allow		STEP MARK	
Auditing		Date		1:5 SORT Cast iron Motor	