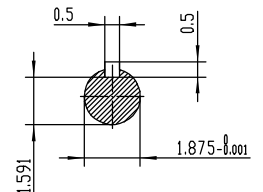
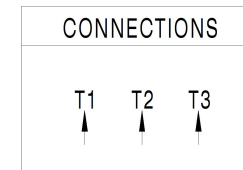


**NOTES:**

1. All Cast Iron Construction
2. Design B
3. IP55 Labyrinth seals on DE and ODE
4. H Class Insulation System
5. Max Winding Temperature rise 80°C
6. Max bearing temperature rise 45°C for 4 pole and 50°C for 2 pole motors when direct coupled.
7. Regreasable bearings
8. External Grounding provisions
9. Maximum foot flatness deviation .127 mm
10. Conductive Polymer Cooling Fan
11. Diagonally Split Conduit Box rotatable in 90° Increments
12. Lead seals in conduit box
13. Maximum no load sound power 85 dBA(2 pole),  
Maximum no load sound power 70 dBA(4 pole),  
Maximum no load sound power 64 dBA(6 pole).
14. No Load Motor Vibration not to exceed
  - a.Radial 60HZ - 2.03mm/s (2,4 pole) and 1.52mm/s (6 pole)
  - b.Axial 60HZ - 1.52mm/s
15. 300 series Stainless Steel hardware
16. Epoxy Coating meeting ASTM B117-97 for 96 h
17. All internal surfaces coated with anti-corrosion coating.
18. Internal Shaft Grounding brush installed on drive end.
19. No Load test report included with motor

<b>TECHTOP</b> IEEE 841 SEVERE DUTY ELECTRIC MOTOR		TECHTOP.COM	
MODEL	SD3-286T-4-BR-E-30	MFG PN	T 286T30U4B
NEMA 30 HP 60 Hz 50 Hz		SER #	1603102029
RPM	1770 1450	DATE	0688002
VOLT(3Ø)	460 380	DESIGN	B
FLA	35.3 43.0	FRAME	286T
SF	1.25 1	ENCL	TEFC
KVA CODE	G D	IP	55
NOM.EFF	0.936	DUTY	Cont.
BEARING SIZE		INS CL	H
DE 6311-G3		AMB	40 °C
ODE 6311-G3		WEIGHT	426 lbs
VFD 15:1 CT-1.0 SF		MADE IN CHINA	



 ShangHai HIMAK Electrical Machinery CO., LTD		NEMA TEFC 286T-30HP-4P	
		IEEE-841 UNITS:INCHN	
Design		NO:	CY256.A20.005
Checker		STEP MARK	1:4.5 SORT Cast iron Motor
Auditing		Standard	
		Allow	
		Date	