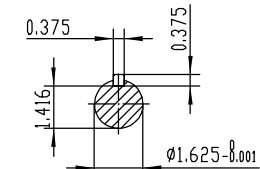
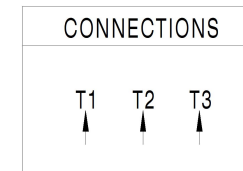


NOTES:

1. All Cast Iron Construction
2. Design B
3. IP55 Labyrinth seals on DE and ODE
4. H Class Insulation System
5. Max Winding Temperature rise 80°C
6. Max bearing temperature rise 45°C for 4 pole and 50°C for 2 pole motors when direct coupled.
7. Regreasable bearings
8. External Grounding provisions
9. Maximum foot flatness deviation .127 mm
10. Conductive Polymer Cooling Fan
11. Diagonally Split Conduit Box rotatable in 90° Increments
12. Lead seals in conduit box
13. Maximum no load sound power 85 dBA(2 pole),
Maximum no load sound power 70 dBA(4 pole),
Maximum no load sound power 64 dBA(6 pole).
14. No Load Motor Vibration not to exceed
 - a.Radial 60HZ - 2.03mm/s (2,4 pole) and 1.52mm/s (6 pole)
 - b.Axial 60HZ - 1.52mm/s
15. 300 series Stainless Steel hardware
16. Epoxy Coating meeting ASTM B117-97 for 96 h
17. All internal surfaces coated with anti-corrosion coating.
18. Internal Shaft Grounding brush installed on drive end.
19. No Load test report included with motor

TECHTOP		IEEE 841		SEVERE DUTY	
				ELECTRIC MOTOR	
MODEL	SD3-284TS-2-BR-E-25	MFG PN	T 284TS2SU2B	TECHTOP.COM	
NEMA	25	60 Hz	50 Hz	SER #	1603102026
HP	25	3530	2920	DATE	0688002
RPM	460	380	348	DESIGN	B
VOLT(3Ø)	28.1	1	1	FRAME	284TS
FLA	1.25	G	E	ENCL	TEFC
SF	0.917	DUTY		IP	55
KVA CODE		INS CL		Cont.	H
NOM.EFF		AMB		Energy Efficient	224693
ARRESTOR		WEIGHT		383 lbs	
VFD 15:1 CT-1.0 SF		MADE IN CHINA			



 ShangHai HIMAK Electrical Machinery CO., LTD		NEMA TEFC 284TS-25HP-2P	
		IEEE-841 UNITS:INCH	
Design		NO:	CY256.A20.001
Checker		STEP MARK	1:4.5 SORT Cast iron Motor
Auditing		Standard	Date