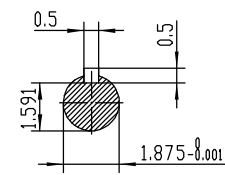
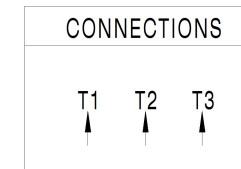


NOTES:

1. All Cast Iron Construction
2. Design B
3. IP55 Labyrinth seals on DE and DDE
4. H Class Insulation System
5. Max Winding Temperature rise 80°C
6. Max bearing temperature rise 45°C for 4 pole and 50°C for 2 pole motors when direct coupled.
7. Regreasable bearings
8. External Grounding provisions
9. Maximum foot flatness deviation .127 mm
10. Conductive Polymer Cooling Fan
11. Diagonally Split Conduit Box rotatable in 90° Increments
12. Lead seals in conduit box
13. Maximum no load sound power 85 dBA(2 pole),
Maximum no load sound power 70 dBA(4 pole),
Maximum no load sound power 64 dBA(6 pole).
14. No Load Motor Vibration not to exceed
 - a.Radial 60HZ - 2.03mm/s (2,4 pole) and 1.52mm/s (6 pole)
 - b.Axial 60HZ - 1.52mm/s
15. 300 series Stainless Steel hardware
16. Epoxy Coating meeting ASTM B117-97 for 96 h
17. All internal surfaces coated with anti-corrosion coating.
18. Internal Shaft Grounding brush installed on drive end.
19. No Load test report included with motor

TECHTOP		IEEE 841		SEVERE DUTY ELECTRIC MOTOR	
MODEL SD3-284T-6-BR-E-15		TECHTOP.COM		MFG PN T 284T15U6B	
NEMA 15 HP 60 Hz 15 50 Hz 15		SER # 1603102028		DATE 0688002	
RPM 1180 975		DESIGN B		CE	
VOLT(3Ø) 480 380		FRAME 284T		CCC/CA	
FLA 20.2 23.8		ENCL TEFC		UL	
SF 1.25 1		IP 55		Energy Efficient	
KVA CODE G E		DUTY Cont.		Energy Efficient 224693	
NOM.EFF 0.917		INS CL H		Energy Efficient 224693	
ARRESTOR		AMB 40 °C		WEIGHT 392.9 lbs	
VFD 15:1 CT-1.0 SF		MADE IN CHINA			



 ShangHai HIMAK Electrical Machinery CO., LTD		NEMA TEFC 284T-15HP-6P	
		IEEE-841 UNITS:INCH	
Design		Standard	NO: CY256.A20.003
Checker		Allow	STEP MARK
Auditing		Date	1:4.5 SORT Cast iron Motor