

NOTES:

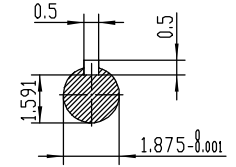
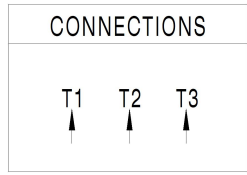
1. All Cast Iron Construction
2. Design B
3. IP55 Labyrinth seals on DE and DDE
4. H Class Insulation System
5. Max Winding Temperature rise 80°C
6. Max bearing temperature rise 45°C for 4 pole and 50°C for 2 pole motors when direct coupled.
7. Regreasable bearings
8. External Grounding provisions
9. Maximum foot flatness deviation .127 mm
10. Conductive Polymer Cooling Fan
11. Diagonally Split Conduit Box rotatable in 90° Increments
12. Lead seals in conduit box
13. Maximum no load sound power 85 dBA(2 pole),
Maximum no load sound power 70 dBA(4 pole),
Maximum no load sound power 64 dBA(6 pole).
14. No Load Motor Vibration not to exceed
 - a.Radial 60HZ - 2.03mm/s (2,4 pole) and 1.52mm/s (6 pole)
 - b.Axial 60HZ - 1.52mm/s
15. 300 series Stainless Steel hardware
16. Epoxy Coating meeting ASTM B117-97 for 96 h
17. All internal surfaces coated with anti-corrosion coating.
18. Internal Shaft Grounding brush installed on drive end.
19. No Load test report included with motor

TECHTOP IEEE 841 SEVERE DUTY ELECTRIC MOTOR

MODEL	SD3-284T-4-BR-E-25	TECHTOP.COM
NEMA Premium [®]	60 Hz 50 Hz	MFG PN T 284T25U4B
HP	25 25	SER # 1603102027
RPM	1770 1450	DATE 0688002
VOLT(3Ø)	480 380	DESIGN B
FLA	30.5 37.0	FRAME 284T
SF	1.25 1	ENCL TEFC
KVA CODE	G D	IP 55
NOM.EFF	0.936	DUTY Cont.
		INS CL H
		AMB 40 °C
		WEIGHT 395.1 lbs

Energy Efficient 224693

MADE IN CHINA



<p>ShangHai HIMAK Electrical Machinery CO., LTD</p>		NEMA TEFC 284T-25HP-4P	
		IEEE-841 UNITS:INCH	
Design	Standard	NO:	CY256.A20.002
Checker	Allow	STEP MARK	1:4.5 SORT Cast iron Motor
Auditing	Date		