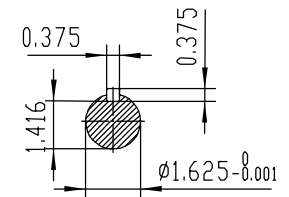
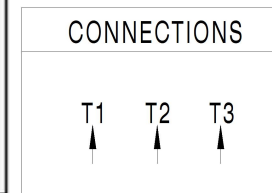


NOTES:

1. All Cast Iron Construction
2. Design B
3. IP55 Labyrinth seals on DE and DDE
4. H Class Insulation System
5. Max Winding Temperature rise 80°C
6. Max bearing temperature rise 45°C for 4 pole and 50°C for 2 pole motors when direct coupled.
7. Regreasable bearings
8. External Grounding provisions
9. Maximum foot flatness deviation .127 mm
10. Conductive Polymer Cooling Fan
11. Diagonally Split Conduit Box rotatable in 90° Increments
12. Lead seals in conduit box
13. Maximum no load sound power 85 dBA(2 pole),
Maximum no load sound power 70 dBA(4 pole),
Maximum no load sound power 64 dBA(6 pole).
14. No Load Motor Vibration not to exceed
a.Radial 60HZ - 2.03mm/s (2,4 pole) and 1.52mm/s (6 pole)
b.Axial 60HZ - 1.52mm/s
15. 300 series Stainless Steel hardware
16. Epoxy Coating meeting ASTM B117-97 for 96 h
17. All internal surfaces coated with anti-corrosion coating.
18. Internal Shaft Grounding brush installed on drive end.
19. No Load test report included with motor

TECHTOP		IEEE 841		SEVERE DUTY	
ELECTRIC MOTOR					
MODEL SD3-256T-6-BR-E-10		TECHTOP.COM			
NEMA 10		60 Hz	50 Hz	MFG PN	T 256T10U6B
HP	10	10	SER #	1603102025	
RPM	1175	960	DATE	0688002	
VOLT(3Ø)	460	380	DESIGN	B	
FLA	13.5	16.5	FRAME	256T	
SF	1.25	1	ENCL	TEFC	
KVA CODE	H	F	IP	55	
NOM.EFF	0.910		DUTY	Cont.	
BEARING SIZE		INS CL		H	
DE 6309-C3		AMB		40 °C	
ODEI 6309-C3		WEIGHT		294.8 lbs	
VFD 15:1 CT-1.0 SF		MADE IN CHINA			



TECHTOP			NEMA TEFC 256T-10HP-6P		
ShangHai HIMAK Electrical Machinery CO., LTD			IEEE-841 UNITS:INCH		
Design		Standard	NO:		CY255.A20.006
Checker		Allow	STEP MARK		1:4 SORT Cast iron Motor
Auditing		Date			