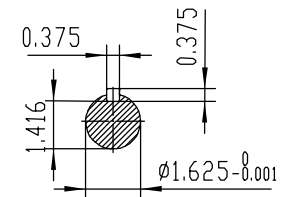
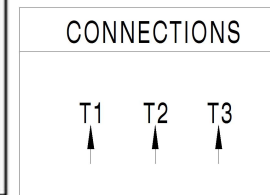


NOTES:

1. All Cast Iron Construction
2. Design B
3. IP55 Labyrinth seals on DE and DDE
4. H Class Insulation System
5. Max Winding Temperature rise 80°C
6. Max bearing temperature rise 45°C for 4 pole and 50°C for 2 pole motors when direct coupled.
7. Regreasable bearings
8. External Grounding provisions
9. Maximum foot flatness deviation .127 mm
10. Conductive Polymer Cooling Fan
11. Diagonally Split Conduit Box rotatable in 90° Increments
12. Lead seals in conduit box
13. Maximum no load sound power 85 dBA(2 pole),
Maximum no load sound power 70 dBA(4 pole),
Maximum no load sound power 64 dBA(6 pole).
14. No Load Motor Vibration not to exceed
a.Radial 60HZ - 2.03mm/s (2,4 pole) and 1.52mm/s (6 pole)
b.Axial 60HZ - 1.52mm/s
15. 300 series Stainless Steel hardware
16. Epoxy Coating meeting ASTM B117-97 for 96 h
17. All internal surfaces coated with anti-corrosion coating.
18. Internal Shaft Grounding brush installed on drive end.
19. No Load test report included with motor

TECHTOP		IEEE 841		SEVERE DUTY ELECTRIC MOTOR	
MODEL: SD3-256T-4-BR-E-20		TECHTOP.COM			
NEMA	60 Hz	50 Hz	MFG PN	T 256T20U48	
HP	20	20	SER #	1603102024	
RPM	1770	1460	DATE	0688002	
VOLT(3Ø)	460	380	DESIGN	B	
FLA	22.9	28.5	FRAME	256T	
SF	1.25	1	ENCL	TEFC	
KVA CODE	G	E	IP	55	
NOM.EFF	0.930		DUTY	Cont.	
		BEARING SIZE		INS CL	
		DE 6308-C3		AMB	
		ODE: 6308-C3		40 °C	
		WEIGHT		347.7 lbs	
		VFD 15:1 CT-1.0 SF		MADE IN CHINA	



TECHTOP			NEMA TEFC 256T-20HP-4P IEEE-841 UNITS:INCH		
ShangHai HIMAK Electrical Machinery CO.,. LTD			NO:		CY255.A20.005
Design		Standard			
Checker		Allow			
Auditing		Date			
			STEP MARK	1:4	SORT Cast iron Motor