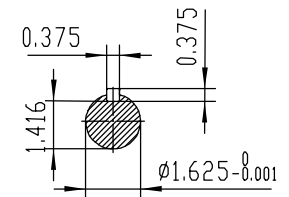
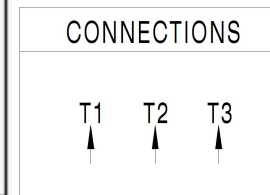


NOTES:

1. All Cast Iron Construction
2. Design B
3. IP55 Labyrinth seals on DE and DDE
4. H Class Insulation System
5. Max Winding Temperature rise 80°C
6. Max bearing temperature rise 45°C for 4 pole and 50°C for 2 pole motors when direct coupled.
7. Regreasable bearings
8. External Grounding provisions
9. Maximum foot flatness deviation .127 mm
10. Conductive Polymer Cooling Fan
11. Diagonally Split Conduit Box rotatable in 90° Increments
12. Lead seals in conduit box
13. Maximum no load sound power 85 dBA(2 pole),
Maximum no load sound power 70 dBA(4 pole),
Maximum no load sound power 64 dBA(6 pole).
14. No Load Motor Vibration not to exceed
a.Radial 60HZ - 2.03mm/s (2,4 pole) and 1.52mm/s (6 pole)
b.Axial 60HZ - 1.52mm/s
15. 300 series Stainless Steel hardware
16. Epoxy Coating meeting ASTM B117-97 for 96 h
17. All internal surfaces coated with anti-corrosion coating.
18. Internal Shaft Grounding brush installed on drive end.
19. No Load test report included with motor

TECHTOP		IEEE 841		SEVERE DUTY ELECTRIC MOTOR	
MODEL SD3-256T-2-BR-E-20		TECHTOP.COM			
NEMA T256T	60 Hz	50 Hz	MFG PN	T 256T20U28	
	HP 20	20	SER #	1603102023	
	RPM 3530	2900	DATE	0688002	
	VOLT(3Ø) 460	380	DESIGN	B	
	FLA 22.6	28.2	FRAME	256T	
	SF 1.25	1	ENCL	TEFC	
KVA CODE	G	E	IP	55	
NOM EFF	0.910		DUTY	Cont.	
			INS CL	H	
			AMB	40 °C	
			WEIGHT	292.6 lbs	
ARC ARRESTOR		BEARING SIZE		MADE IN CHINA	
VFD 15:1 CT-1.0 SF		DE 6306-C3		Energy Verified	
		ODE 6306-C3		224693	



 ShangHai HIMAK Electrical Machinery CO., LTD			NEMA TEFC 256T-20HP-2P		
			IEEE-841 UNITS:INCH		
Design		Standard	NO:		CY255.A20.004
Checker		Allow	STEP MARK		1:4 SORT Cast iron Motor
Auditing		Date			