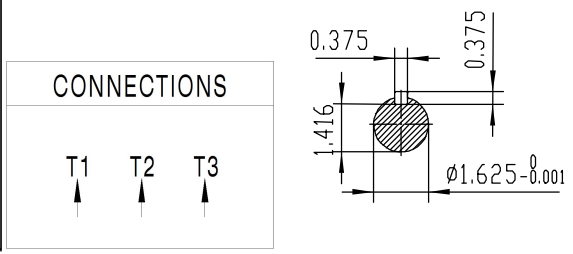


NOTES:

1. All Cast Iron Construction
2. Design B
3. IP55 Labyrinth seals on DE and DDE
4. H Class Insulation System
5. Max Winding Temperature rise 80°C
6. Max bearing temperature rise 45°C for 4 pole and 50°C for 2 pole motors when direct coupled.
7. Regreasable bearings
8. External Grounding provisions
9. Maximum foot flatness deviation .127 mm
10. Conductive Polymer Cooling Fan
11. Diagonally Split Conduit Box rotatable in 90° Increments
12. Lead seals in conduit box
13. Maximum no load sound power 85 dBA(2 pole),
Maximum no load sound power 70 dBA(4 pole),
Maximum no load sound power 64 dBA(6 pole).
14. No Load Motor Vibration not to exceed
a.Radial 60HZ - 2.03mm/s (2,4 pole) and 1.52mm/s (6 pole)
b.Axial 60HZ - 1.52mm/s
15. 300 series Stainless Steel hardware
16. Epoxy Coating meeting ASTM B117-97 for 96 h
17. All internal surfaces coated with anti-corrosion coating.
18. Internal Shaft Grounding brush installed on drive end.
19. No Load test report included with motor

TECHTOP		IEEE 841		SEVERE DUTY ELECTRIC MOTOR	
MODEL SD3-254T-4-BR-E-15		TECHTOP.COM			
NEMA Premium		60 Hz	50 Hz	MFG PN	T 254T15U4B
HP	15	15	SER #	1603102021	CE
RPM	1770	1460	DATE	0688002	
VOLT(3Ø)	460	380	DESIGN	B	CCC
FLA	17.3	21.0	FRAME	254T	
SF	1.25	1	ENCL	TEFC	SMA 630586
KVA CODE	G	E	IP	55	
NOM.EFF	0.924		DUTY	Cont.	SIL Energy Verified 224693
BEARING SIZE		INS CL	H		
ARC ARRESTOR		DE	6309-C3	AMB	40 °C
VFD 15:1 CT-1.0 SF		ODE	6309-C3	WEIGHT	295.9 lbs
		MADE IN CHINA			



 ShangHai HIMAK Electrical Machinery CO., LTD			NEMA TEFC 254T-15HP-4P		
			IEEE-841 UNITS:INCH		
Design			NO:	CY255.A20.002	
Checker			STEP MARK	1:4 SORT Cast iron Motor	
Auditing			Date		