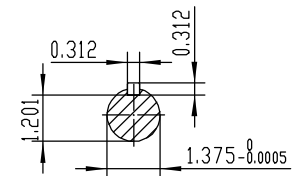
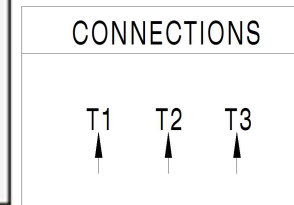


**NOTES:**

1. All Cast Iron Construction
2. Design B
3. IP55 Labyrinth seals on DE and ODE
4. H Class Insulation System
5. Max Winding Temperature rise 80°C
6. Max bearing temperature rise 45°C for 4 pole and 50°C for 2 pole motors when direct coupled.
7. Regreasable bearings
8. External Grounding provisions
9. Maximum foot flatness deviation .127 mm
10. Conductive Polymer Cooling Fan
11. Diagonally Split Conduit Box rotatable in 90° Increments
12. Lead seals in conduit box
13. Maximum no load sound power 85 dBA(2 pole), Maximum no load sound power 70 dBA(4 pole), Maximum no load sound power 64 dBA(6 pole).
14. No Load Motor Vibration not to exceed
  - a.Radial 60HZ - 2.03mm/s (2,4 pole) and 1.52mm/s (6 pole)
  - b.Axial 60HZ - 1.52mm/s
15. 300 series Stainless Steel hardware
16. Epoxy Coating meeting ASTM B117-97 for 96 h
17. All internal surfaces coated with anti-corrosion coating.
18. Internal Shaft Grounding brush installed on drive end.
19. No Load test report included with motor

<b>TECHTOP</b>		<b>IEEE 841</b>		<b>SEVERE DUTY</b>	
				<b>ELECTRIC MOTOR</b>	
MODEL SD3-213T-2-8R-E-7.5			TECHTOP.COM		
NEMA Premium		60 Hz	50 Hz	MFG PN	T 213T7.5U2B
HP	7.5	7.5	SER #	1603102014	
RPM	3510	2865	DATE	0688002	
VOLT(3Ø)	460	380	DESIGN	B	
FLA	8.5	10.5	FRAME	213T	
SF	1.25	1	ENCL	TEFC	
KVA CODE	H	G	IP	55	
NOM.EFF	0.895		DUTY	Cont.	
ARC ARRESTOR		BEARING SIZE		INS CL	H
VFD 15:1 CT-1.0 SF		DE 6308-Z		AMB	40 °C
		ODE 6308-Z		WEIGHT	149.8 lbs
				MADE IN CHINA	



 ShangHai HIMAK Electrical Machinery CO., LTD			NEMA TEFC 213T-7.5HP-2P		
			IEEE-841 UNITS:INCH		
Design		Standard	NO:	CY254.A20.001	
Checker		Allow	STEP MARK	1:3.5 SORT Cast iron Motor	
Auditing		Date			