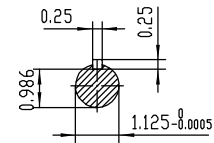
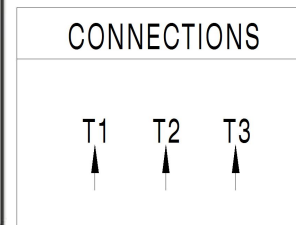


NOTES:

1. All Cast Iron Construction
2. Design B
3. IP55 Labyrinth seals on DE and ODE
4. H Class Insulation System
5. Max Winding Temperature rise 80°C
6. Max bearing temperature rise 45°C for 4 pole and 50°C for 2 pole motors when direct coupled.
7. Regreasable bearings
8. External Grounding provisions
9. Maximum foot flatness deviation .127 mm
10. Conductive Polymer Cooling Fan
11. Diagonally Split Conduit Box rotatable in 90° Increments
12. Lead seals in conduit box
13. Maximum no load sound power 85 dBA(2 pole),
Maximum no load sound power 70 dBA(4 pole),
Maximum no load sound power 64 dBA(6 pole).
14. No Load Motor Vibration not to exceed
a.Radial 60HZ - 2.03mm/s (2,4 pole) and 1.52mm/s (6 pole)
b.Axial 60HZ - 1.52mm/s
15. 300 series Stainless Steel hardware
16. Epoxy Coating meeting ASTM B117-97 for 96 h
17. All internal surfaces coated with anti-corrosion coating.
18. Internal Shaft Grounding brush installed on drive end.
19. No Load test report included with motor

TECHTOP IEEE 841 SEVERE DUTY ELECTRIC MOTOR

MODEL	SD3-184T-6-BR-E-2		TECHTOP.COM
NEMA	60 Hz	50 Hz	MFG PN T 184T2U6B
HP	2	2	SER # 1603102013
RPM	1175	970	DATE 0688002
VOLT(3Ø)	460	380	DESIGN B
FLA	3.1	3.6	FRAME 184T
SF	1.25	1	ENCL TEFC
KVA CODE	J	H	IP 55
NOM.EFF	0.885		DUTY Cont.
BEARING SIZE			INS CL H
DE 6308-2			AMB 40 °C
ODE 6308-2			WEIGHT 121.4 lbs
VFD 15:1 CT-1.0 SF			MADE IN CHINA



<p>ShangHai HIMAK Electrical Machinery CO., LTD</p>		NEMA TEFC 184T-2HP-6P	
		IEEE-841 UNITS:INCH	
Design		NO:	CY253.A20.006
Checker		STEP MARK	1:3.5 SORT Cast iron Motor
Auditing		Standard	
		Allow	
		Date	