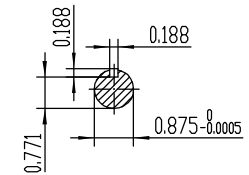


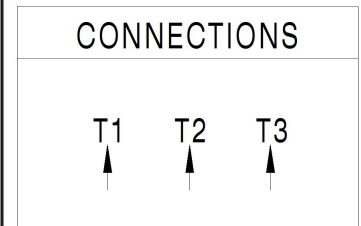
NOTES:

1. All Cast Iron Construction
2. Design B
3. IP55 Labyrinth seals on DE and DDE
4. H Class Insulation System
5. Max Winding Temperature rise 80°C
6. Max bearing temperature rise 45°C for 4 pole and 50°C for 2 pole motors when direct coupled.
7. Regreasable bearings
8. External Grounding provisions
9. Maximum foot flatness deviation .127 mm
10. Conductive Polymer Cooling Fan
11. Diagonally Split Conduit Box rotatable in 90° Increments
12. Lead seals in conduit box
13. Maximum no load sound power 85 dBA(2 pole),
Maximum no load sound power 70 dBA(4 pole),
Maximum no load sound power 64 dBA(6 pole).
14. No Load Motor Vibration not to exceed
a.Radial 60HZ - 2.03mm/s (2,4 pole) and 1.52mm/s (6 pole)
b.Axial 60HZ - 1.52mm/s
15. 300 series Stainless Steel hardware
16. Epoxy Coating meeting ASTM B117-97 for 96 h
17. All internal surfaces coated with anti-corrosion coating.
18. Internal Shaft Grounding brush installed on drive end.
19. No Load test report included with motor



TECHTOP IEEE 841 SEVERE DUTY ELECTRIC MOTOR

MODEL	SD3-143T-2-BR-E-1.5		TECHTOP.COM
NEMA Premium	60 Hz	50 Hz	MFG PN T 143T1.5U2B
HP	1.5	1.5	SER # 1603102002
RPM	3500	2860	DATE 0688002
VOLT(3Ø)	460	380	DESIGN B
FLA	2.0	2.4	FRAME 143T
SF	1.25	1	ENCL TEFC
KVA CODE	K	H	IP 55
NOM.EFF	0.840		DUTY Conf.
BEARING SIZE	DE 6205-2		INS CL H
ARC ARRESTOR	ODE 6205-Z		AMB 40 °C
VFD 15:1 CT-1.0 SF	WEIGHT 45.9 lbs		MADE IN CHINA



<p>ShangHai HIMAK Electrical Machinery CO., LTD</p>		NEMA TEFC 143T-1.5HP-2P	
		IEEE-841 UNITS:INCH	
Design		Standard	
Checker		Allow	
Auditing		Date	
NO:		CY252.A20.002	
STEP MARK		1:3	SORT Cast iron Motor